


Braindump2go Latest 70-410 Brain Dumps Questions More Than 98 Percent Real Microsoft 70-410 Exam (11-20)

MICROSOFT OFFICIAL: **New Updated 70-410 Exam Questions from Braindump2go 70-410 pdf dumps and 70-410 vce dumps! Welcome to download the newest Braindump2go 70-410 vce&pdf dumps:** <http://www.braindump2go.com/70-410.html> (471 Q&As) 2015 Timesaving Comprehensive Guides For Microsoft 70-410 Exam: Using Latst Released Braindump2go 70-410 Practice Tests Questions, Quickly Pass 70-410 Exam 100%! Following Questions and Answers are all the New Published By Microsoft Official Exam Center! Exam Code: 70-410Exam Name Installing and Configuring Windows Server 2012Certification Provider: MicrosoftCorresponding Certifications: MCSA, MCSA: Windows Server 2012, MCSE, MCSE: Desktop Infrastructure, MCSE: Private Cloud, MCSE: Server InfrastructureKeywords:70-410 Dumps,70-410 Exam Questions,70-410 VCE,70-410 VCE Free,70-410 PDF,70-410 Lab Manual PDF,70-410 Practice Exams,70-410 Practice Tests,70-410 Installing and Configuring Windows Server 2012

Installing and Configuring Windows Server 2012 R2 Exam: 70-410



Product Description Exam Number/Code: 70-410

Exam Number/Code: 70-410

"Installing and Configuring Windows Server 2012 R2 Exam", also known as 70-410 exam, is a Microsoft Certification. With the complete collection of questions and answers, Braindump2go has assembled to take you through 471 Q&As to your 70-410 Exam preparation. In the 70-410 exam resources, you will cover every field and category in Microsoft MCSA helping to ready you for your successful Microsoft Certification.

Questions and Answers : 471 Q&As
Updated: Sep 03, 2015

~~\$429.99~~ **\$99.99**

[PDF DEMO](#)

[CHECK OUT](#)

Printable PDF **Premium VCE + VCE Simulator**

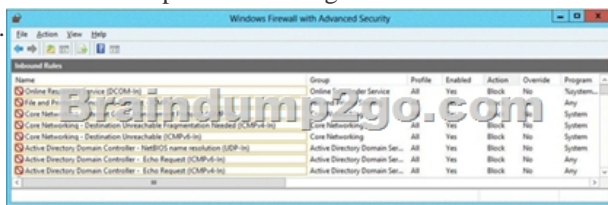
Free Demo Download

Braindump2go offers free demo for 70-410 exam (Installing and Configuring Windows Server 2012 R2 Exam). You can check out the interface, question quality and usability of our practice exams before you decide to buy it.

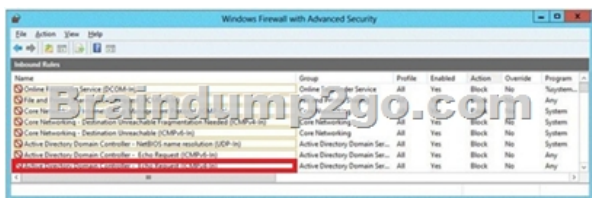
QUESTION 11Hotspot QuestionYour network contains an Active Directory domain named corp.contoso.com. The domain contains a domain controller named DC1. When you run ping dcl.corp.contoso.com, you receive the result as shown in the exhibit. (Click the Exhibit button.)



You need to ensure that DC1 can respond to the Ping command. Which rule should you modify? To answer, select the appropriate rule in the answer area.



Answer:



QUESTION 12 Your network contains an Active Directory domain named contoso.com. The domain contains two domain controllers. The domain controllers are configured as shown in the following table.

Name	Operating system	Operation master role
DC1	Windows Server 2012	Domain naming master
DC2	Windows Server 2008 R2	Schema master PDC emulator RID master Infrastructure master

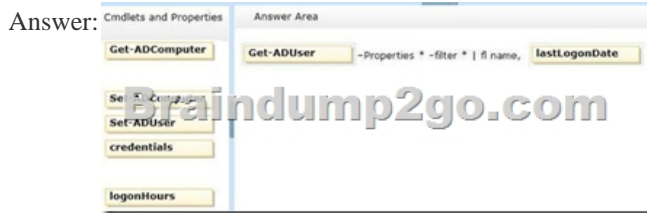
You install a new server named Server 1 that runs a Server Core Installation of Windows Server 2012 R2. You need to join Server 1 to the contoso.com domain. The solution must minimize administrative effort. What should you use? A. The dsadd.exe command B. The New-ADComputer cmdlet C. The Djoin.exe command D. The Add-Computer cmdlet Answer: D Explanation: A. Adds specific types of objects to the directory B. Creates a new Active Directory computer. C. Use djoin for offline join in the perimeter network . D. Add the local computer to a domain or workgroup. <http://technet.microsoft.com/en-us/library/ee617245.aspx> [http://technet.microsoft.com/en-us/library/ff793312\(v=ws.10\).aspx](http://technet.microsoft.com/en-us/library/ff793312(v=ws.10).aspx)

QUESTION 13 Drag and Drop Question You have a print server named Server1. Server1 runs Windows Server 2008 R2. You have a file server named Server2. Server2 runs Windows Server 2012 R2. You need to migrate all of the printers on Server1 to Server2. Which actions should you perform on the servers?

Answer:

Explanation: printbrm -p all:org - Publishes all printers in the directory, or publishes printers that were published originally. While the original server is still running, use the Printer Migration Wizard or the Printbrm.exe command-line tool to export or back up the print information (such as settings, queues, and drivers) in a printer settings file. Then, import or restore this backup image to a destination server running Windows Server 2012 that has been configured to run as a print server. <http://technet.microsoft.com/en-us/library/jj134150.aspx>

QUESTION 14 Your network contains an Active Directory domain named contoso.com. The domain contains a server named Server1. Server1 runs Windows Server 2012 and is configured as the only domain controller. You need to retrieve a list of all the user accounts. The list must include the last time each user was authenticated successfully. Which Windows PowerShell command should you run? (To answer, drag the appropriate cmdlet or property to the correct locations to complete the PowerShell command in the answer area. Each cmdlet or property may be used once, more than once, or not at all. You may need to drag the split bar between panes or scroll to view content.)



Explanation: To produce a listing of all the users and their last logon date, you can use a command. `Get-ADUser -Filter * -Properties "LastLogonDate" | sort-object -property lastlogondate -descending | Format-Table -property name, lastlogondate -AutoSize`
<http://blogs.technet.com/b/heyscriptingguy/archive/2010/07/20/hey-scripting-guy-how-can-i-use-windows-powershell-to-identify-in-active-user-accounts-in-active-directory-domain-services.aspx> <http://technet.microsoft.com/en-us/library/ee617192.aspx> [http://technet.microsoft.com/en-us/library/cc732952\(v=ws.10\).aspx](http://technet.microsoft.com/en-us/library/cc732952(v=ws.10).aspx) <http://technet.microsoft.com/en-us/library/cc732979.aspx>

QUESTION 15 Your network contains an Active Directory domain named contoso.com. The domain contains a server named Server1 that runs Windows Server 2012 R2. Server1 contains a single virtual machine named VM1. You need to ensure that a user named User1 can manage the virtual machine settings of VM1. The solution must minimize the number of permissions assigned to User1. To which group should you add User1? A. Server Operators B. Administrators C. Power Users D. Hyper-V Administrators

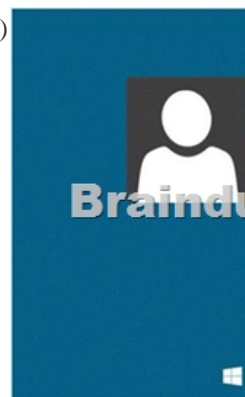
Answer: D Explanation: This group can reduce the number of users that belong to the local Administrators group while providing users with access to Hyper-V. Simplified authorization: The Hyper-V Administrators group is introduced and is implemented as a local security group. What value does this change add? This group can reduce the number of users that belong to the local Administrators group while providing users with access to Hyper-V. What works differently? The Hyper-V Administrators group is a new local security group. Add users to this group instead of the local Administrators group to provide them with access to Hyper-V. Members of the Hyper-V Administrators have complete and unrestricted access to all features of Hyper-V.

<http://technet.microsoft.com/en-us/library/hh831410.aspx> QUESTION 16 Your network contains an Active Directory domain named contoso.com. The domain contains a server named Windows Server 2012 R2. You create a group Managed Service Account named gservice1. You need to configure a service named Service1 to run as the gservice1 account. How should you configure Service1? A. From the Services console, configure the General settings. B. From Windows PowerShell, run Set-Service and specify the -StartupType parameter. C. From a command prompt, run sc.exe and specify the config parameter. D. From a command prompt, run sc.exe and specify the privs parameter.

Answer: C Explanation: A. General settings only allow you to stop, start and set type/parameters B. Set-Service provides a way for you to change the Description, StartupType, or DisplayName of a service C. Modifies service configuration D. Sets the response/action on service failure

<http://windows.microsoft.com/en-us/windows-vista/using-system-configuration> <http://technet.microsoft.com/en-us/library/ee176963.aspx> [http://technet.microsoft.com/en-us/library/cc990290\(v=ws.10\).aspx](http://technet.microsoft.com/en-us/library/cc990290(v=ws.10).aspx) [http://technet.microsoft.com/en-us/library/cc738230\(v=ws.10\).aspx](http://technet.microsoft.com/en-us/library/cc738230(v=ws.10).aspx)

QUESTION 17 Your network contains an Active Directory domain named contoso.com. The domain contains a domain controller named DC1 that runs Windows Server 2012 R2. A user named User1 attempts to log on to DC1, but receives the error message shown in the exhibit. (Click the Exhibit button.)

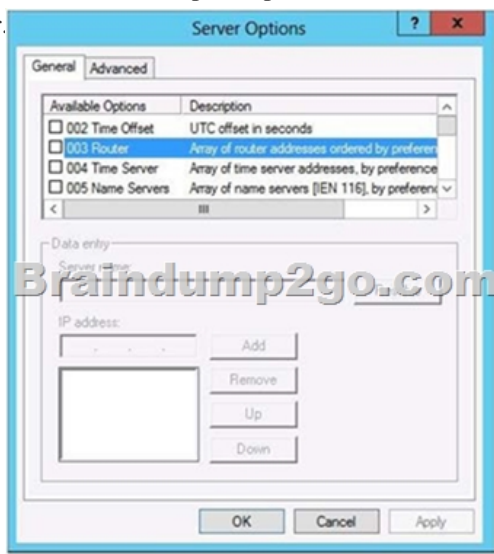


You need to ensure that User1 can log on to DC1. What should you do? A. Modify the Account is sensitive and cannot be delegated setting of the User1 account. B. Grant User1 the Allow log on locally user right. C. Modify the Logon Workstations setting of the User1 account. D. Add User1 to the Remote Management Users group. Answer: B Explanation: Domain controllers, by default, restrict the types of user accounts that have the ability to log on locally. Domain controllers, by default, restrict the types

of user accounts that have the ability to log on locally. By default, only members of the Account Operators, Administrators, Backup Operators, Print Operators, and Server Operators groups have the Allowed logon locally system right. If you want to grant a user account the ability to log on locally to a domain controller, you must either make that user a member of a group that already has the Allowed logon locally system right or grant the right to that user account. Edit Default Domain Controllers Policy Expand Computer Configuration, Policies, Windows Settings, Security Settings, Local Policies, click User Rights Assignment. Double-click Allow Logon Locally. [http://technet.microsoft.com/en-us/library/ee957044\(v=ws.10\).aspx](http://technet.microsoft.com/en-us/library/ee957044(v=ws.10).aspx) QUESTION 18 Your network contains a single Active Directory domain named contoso.com. The network contains two subnets. The subnets are configured as shown in the following table.

Subnet name	Network IP address
MainOffice	192.168.1.0
Warehouse	192.168.1.0

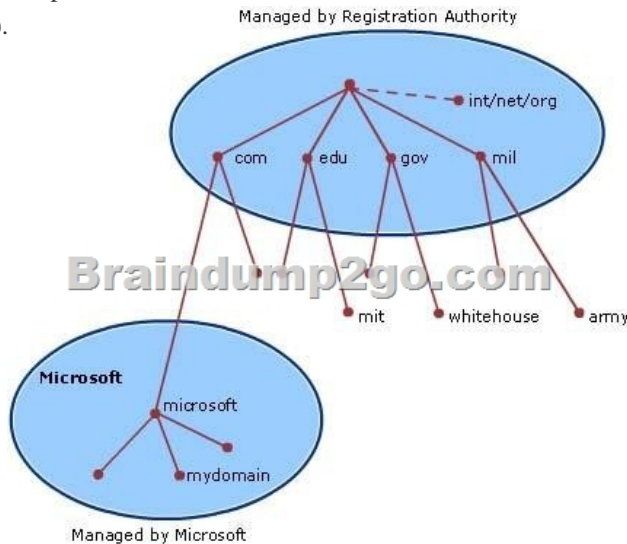
The network contains a member server named Server1 that runs Windows Server 2012 R2. Server1 has the DHCP Server server role installed. Server1 is configured to lease IP addresses to the two subnets. You discover that computers on the Warehouse subnet that have static IP addresses can communicate with the computers on the MainOffice subnet. Computers on the Warehouse subnet that obtain an IP address automatically can only communicate with other computers on the Warehouse subnet. You need to ensure that all of the computers on the Warehouse subnet can communicate with the computers on the MainOffice subnet. Which DHCP option should you configure on Server1? A. 003 Router B. 011 Resource Location Servers C. 020 Nonlocal Source Routing D. 019 IP Layer Forwarding Answer: A Explanation: A. This option is normally used to assign a default gateway to DHCP clients on a subnet. A DHCP client requests this option. B. This option specifies a list of IP addresses for resource location servers. C. This option specifies whether the DHCP client enables or disables the forwarding at the IP layer of datagrams that contain source routing information and were sent by a non-local host. D. This option specifies whether the DHCP client should enable or disable forwarding of datagrams at the IP layer.



[http://technet.microsoft.com/en-us/library/dd145324\(v=ws.10\).aspx](http://technet.microsoft.com/en-us/library/dd145324(v=ws.10).aspx)

[http://technet.microsoft.com/en-us/library/ee941211\(v=ws.10\).aspx](http://technet.microsoft.com/en-us/library/ee941211(v=ws.10).aspx) QUESTION 19 Your network contains an Active Directory domain named contoso.com. The network contains 500 client computers that run Windows 8. All of the client computers connect to the Internet by using a web proxy. You deploy a server named Server1 that runs Windows Server 2012 R2. Server1 has the DNS Server server role installed. You configure all of the client computers to use Server1 as their primary DNS server. You need to prevent Server1 from attempting to resolve Internet host names for the client computers. What should you do on Server1? A. Configure the Security settings of the contoso.com zone. B. Remove all root hints. C. Create a primary zone named ".". D. Create a primary zone named "root". E. Create a primary zone named "GlobalNames". F. Create a forwarder that points to 169.254.0.1. G. Create a stub zone named "root". H. Create a zone delegation for GlobalNames.contoso.com. Answer: BC Explanation: Explanation: B. necessary to remove the default root hints files C. Create a primary zone named "." (dot zone, root) When you install DNS on a Windows server that does not have a connection to the Internet, the zone for the domain is created and a root zone, also known as a dot zone, is also created. This root zone may prevent access to the Internet for DNS and for clients of the


DNS. If there is a root zone, there are no other zones other than those that are listed with DNS, and you cannot configure forwarders or root hint servers. Root domain This is the top of the tree, representing an unnamed level; it is sometimes shown as two empty quotation marks (""), indicating a null value. When used in a DNS domain name, it is stated by a trailing period (.) to designate that the name is located at the root or highest level of the domain hierarchy. In this instance, the DNS domain name is considered to be complete and points to an exact location in the tree of names. Names stated this way are called fully qualified domain names (FQDNs).



<http://technet.microsoft.com/en-us/library/cc772774%28v=ws.10%29.aspx> <http://youtu.be/KjMDtIR6Mhk>

<http://support.microsoft.com/kb/298148/en-us> QUESTION 20 Your company has a remote office that contains 600 client computers on a single subnet. You need to select a subnet mask for the network that will support all of the client computers. The solution must minimize the number of unused addresses. Which subnet mask should you select? A. 255.255.252.0 B. 255.255.254.0 C. 255.255.255.0 D. 255.255.255.128 Answer: A Explanation: Using a subnet mask of 255.255.252.0 will result in the fewest number of unused IP addresses. Braindump2go New Released 70-410 Dump PDF Free Download, 471 Questions in all, Passing Your Exam 100% Easily!

Installing and Configuring Windows Server 2012 R2 Exam: 70-410



Product Description Exam Number/Code: 70-410

Exam Number/Code: 70-410

"Installing and Configuring Windows Server 2012 R2 Exam", also known as 70-410 exam, is a Microsoft Certification. With the complete collection of questions and answers, Braindump2go has assembled to take you through 471 Q&As to your 70-410 Exam preparation. In the 70-410 exam resources, you will cover every field and category in Microsoft MCSA helping to ready you for your successful Microsoft Certification.

Free Demo Download

Braindump2go offers free demo for 70-410 exam (Installing and Configuring Windows Server 2012 R2 Exam). You can check out the interface, question quality and usability of our practice exams before you decide to buy it.

Printable PDF Premium VCE + VCE Simulator

Questions and Answers : 471
Q&As
Updated: Sep 03, 2015
~~\$129.99~~ **\$99.99**

[PDF DEMO](#)

[CHECK OUT](#)

70-410 PDF Dumps & 70-410 VCE Dumps Full Version Download(471q):]<http://www.braindump2go.com/70-410.html>